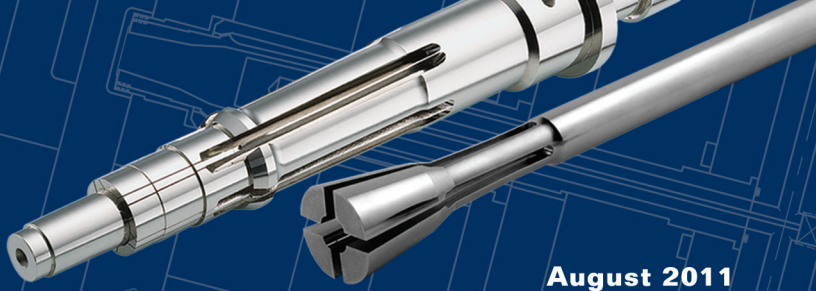




CORE COMPETENCIES

News from Roehr Tool Corporation



August 2011

APPLICATION REVIEW — DT CORES

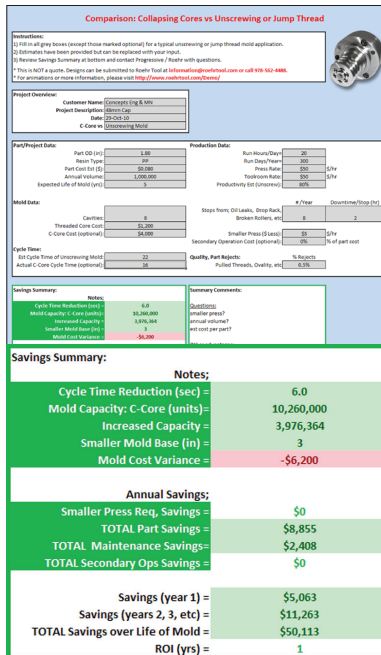
Dale Woiken at Concepts Engineering in Rancho Cucamonga, CA, recently worked with Roehr's team on the design and build of five 8-cavity cap molds for a major OEM manufacturer of personal and beauty products. DT Cores were chosen for this project because they save time and reduce costs.

"As a designer, I like the amount of precision the DT Cores offer, as well as their durability and simplicity," he said. "These are things that designers appreciate. It's fundamentally an easier mold to design because there are no gears or hydraulics.

"From a moldmaker standpoint, their job is also much simpler," he continued. "They purchase a complete, ready to go DT Core unit with thread detail already machined in. Just order a mold base, create cavity and stripper inserts and they're done."

"For our molder customer, because there are no gears, racks or hydraulics, we can reduce costs by using a smaller mold base and therefore a smaller molding machine," he adds. "There is also a definite cycle time advantage compared to other methods, and that's significant in terms of both production and cost savings."

See the chart (at right) for an example of savings for all five DT Cores molds. Visit RoehrTool.com for more information about DT Cores.



Roehr's online Collapsible Core Calculator shows an example of how Concepts Engineering's cap molds, as a full project, will save their customer \$250,000 over next 5 years.

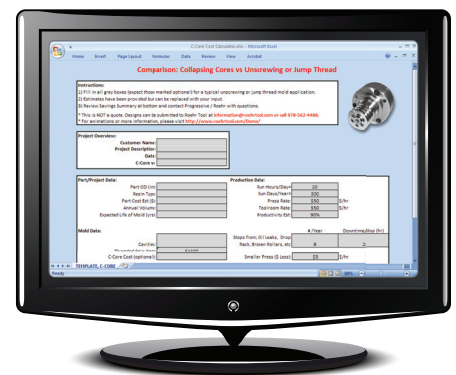
DID YOU KNOW?

Roehr now has a **Collapsible Core Calculator** on its website that can help you identify the savings that will result from making the conversion from an unscrewing tool to a simplified, open-shut tool utilizing DT Collapsible Cores.

Check out the example, at left, for a real-world example of the cost savings that can be had by your company. Depending on the data you input into the calculator, your projected savings could be significantly more!

This online comparison tool is available 24 hours a day and it's easy to use; however, you don't have to go it alone. Give the Tech Team at Roehr a call at 877-563-1912 and let us assist you! We're available for meetings in person or via WebEx or Skype.

To learn more about DT Collapsible Cores, or any of Roehr's products, access the animation section of the Roehr website at RoehrTool.com/Demo.



Visit www.RoehrTool.com/Math to download the Collapsible Core Calculator today.

SEE US AT...

Watch for Roehr Tool at these industry events:



September 12 - 14
Atlanta, GA
Booth No. 11



September 20 - 22
Chicago, IL
Booth No. 1773



September 26 - 28
Las Vegas, NV
Booth No. 6920

